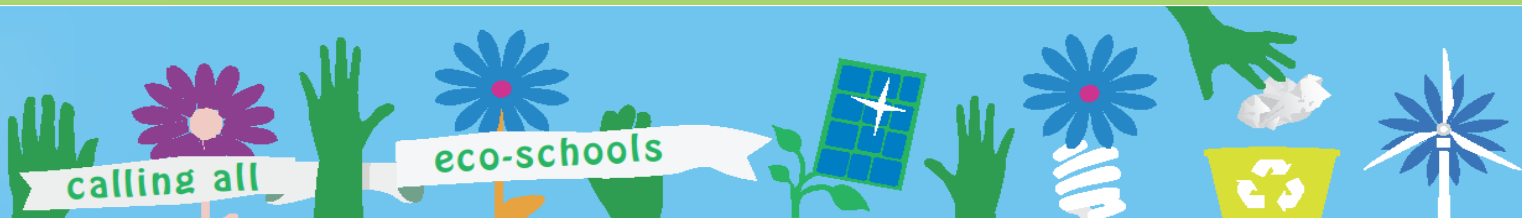


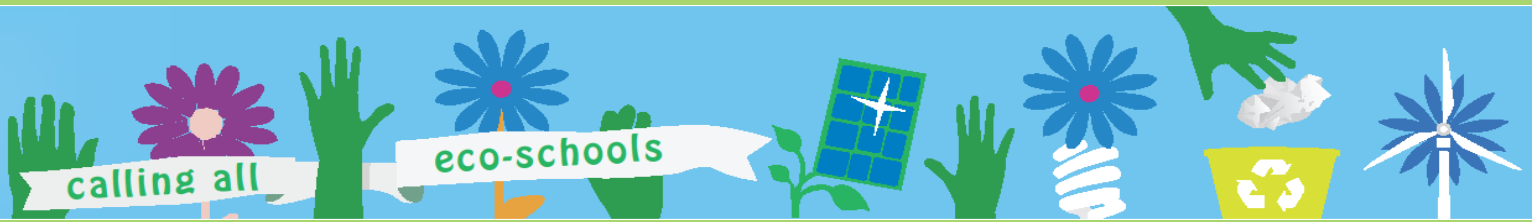
Eco-Schools USA Award Checklist: **Green Flag**

Use this handy checklist to help track your school's progress through the Eco-Schools USA program and confirm that you are meeting criteria to apply for a bronze level award.

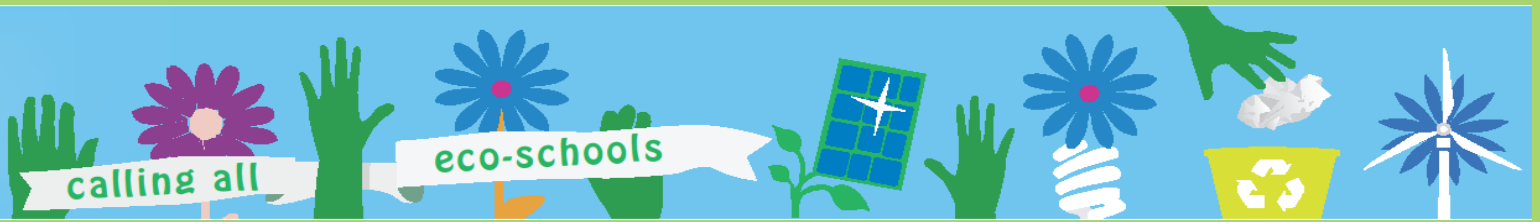
Criteria	Completed (✓)	Notes	Tips
Eco-Action Team			
50% of the Eco-Action Team is composed of students in addition to teachers, community members, and other school staff on the team.			Consider connecting with resource professionals from local government or conservation organizations.
The Eco-Action Team meets a minimum of eight times a year.			Some schools meet more frequently in the beginning and then scale back meetings once their program has become established.
Students take significant responsibility for conducting the meetings, are part of the team's decision-making process, and help keep minutes.			If they are old enough give students the opportunity to lead some of the team meetings.
Students actively engage other students and take suggestions from the student body			Allow students to determine how they will share information and in what form.
Environmental Audit			
The audit is conducted on a formal and comprehensive basis, utilizing the Eco-Schools USA audit checklist			You can complete the overall comprehensive audit, or simply complete an audit for the pathways you would like to focus on.



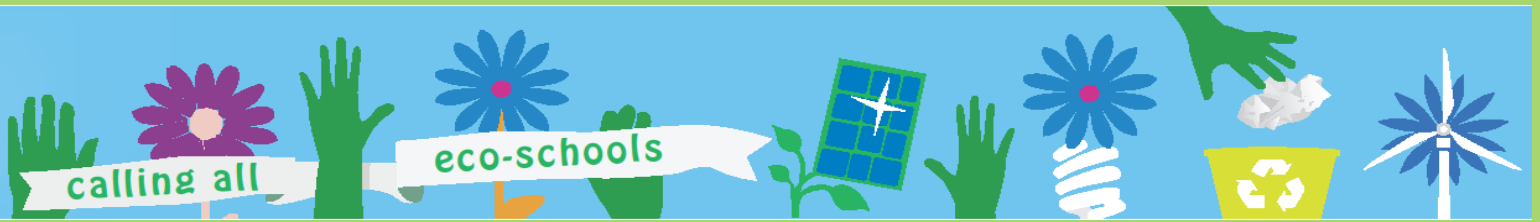
Criteria	Completed (✓)	Notes	Tips
Environmental Audit (continued)			
Students are involved in conducting the environmental audit and engaging resource specialists in the community.			Determine which audit steps are safe for students to complete and which should be completed by an adult.
Results of the audit are shared with the whole school and wider community.			Go over audit results at an assembly, PTA meeting, post on a bulletin board, or write an article for the school paper.
The audit is completed every year.			Before completing the audit every year review results from the last year to establish a benchmark.
Eco-Action Plan			
<p>Create an action plan based on audit results that has quantifiable targets and a timeframe. Your action plan should focus on the energy pathway and two other pathways.</p> <p>Additional Pathways:</p> <p>_____</p> <p>_____</p>			Two of the pathways can be the pathways you focused on when applying for the silver level award.
The action plan is shared with the entire school and local community.			Contact your local newspaper and ask the paper to publicize details about the success of your Eco-Schools USA Program.



Criteria	Completed (✓)	Notes	Tips
Eco-Action Plan (continued)			
A range of actions are planned, targets are prioritized, and cost-benefit information is provided for each action			Prioritize your actions by dividing them into what is achievable in the short, medium and longer term.
Monitor & Evaluate			
The Eco-Action Team Monitors and reviews progress against timeframes and targets outlined in the action plan			Your procedure for monitoring progress should be developed in parallel with the action plan.
Progress and challenges are communicated to the whole school and wider community.			Progress and challenges should also be recorded in meeting minutes.
The school shows significant progress on several large-scale projects that focus on three Eco-Schools pathways			You are required to focus on the energy pathway, so one project needs to focus on energy.
Students are engaged in portions of monitoring and evaluation. Data is used in some curriculum work.			Encourage students to plot data on a graph or do calculations by hand.
Link to Curriculum			
Environmental issues are integrated into the classroom at all grade levels and across disciplines.			You may not be able to integrate across as many disciplines as you'd like, but you should make an effort to integrate across as many as possible to show it is a whole school effort.



Criteria	Completed (√)	Notes	Tips
Link to Curriculum (continued)			
Student experiences are integrated into the curriculum and are inquiry-based.			If needed, we have a list of recommended curriculum on the Eco-Schools USA website, under each pathway.
School staff are provided with professional development and training on best practices, knowledge and skills for environmental education.			Reach out to organizations in the community who can train staff on environmental education.
Community Involvement			
The school has a bulletin board, website or newsletter which details Eco-Schools USA activities.			See if students can write content as part of their English or journalism class.
The whole school, along with volunteers from the community engage in a number of Eco-Schools activities.			Don't be shy about reaching out to the community and asking them for help or donations.
A special event is planned that engages the greater community in learning about and helping with Eco-Schools projects.			Consider holding an audit party or holding an event to celebrate Earth Day.
Students write about Eco-Schools projects for local papers and magazines.			Don't forget about online opportunities to publish information about your work.



Criteria	Completed (√)	Notes	Tips
Community Involvement (continued)			
The school shares its Eco-Schools project with other schools in the U.S. and with the global community through the Eco-Schools USA website and other communication tools.			Reach out to Eco-Schools staff and let us know if you'd like to connect with an Eco-School in another country.
Eco-Code			
An Eco-Code is developed that includes input from the whole school, and is agreed upon and adopted.			It should demonstrate, in a clear and imaginative way, your school's commitment to improving its environmental performance.
The finished Eco-Code is prominently displayed for all to read as they enter the school			We'd love to see a framed copy of your Eco-Code by the main door.
Each year the Eco-Code is reviewed as part of a review process to make sure it is still relevant			Consider whether it might make sense to add something new to the Eco-Code each year as your program grows and develops.